

PIETBOON

AURE FABRICS

FEATURES

Nr.	01-01 03-11 09-9138 10-2438 12-02	02-07 08-25	04-01 07-37 11-45	05-232 15-38	06-107 14-108	13-06	16-11
Composition	95% LI, 5% PA	58% VI, 31% CO, 11% LI	53% VI, 24% LI, 21% CO, 2% PA	33% VI, 27% CO, 16% LI, 12% PL, 12% PC	42% CO, 26% PL, 32% PC	70% PP, 30% PL	70% PC, 15% CO, 15% PL
Width	140	140	140	140	140	140	140
Weight	1120 G/LM	567 G/LM	700 G/LM	875 G/LM	1005 G/LM	950 G/LM	730 g/lm
Abrasion (martindale)	60.000	40.000	57.000	30.000	45.000	60.000	30.000
Colour fastness	ISO 3-5 dep. On colour	ISO 4	ISO 4-5	ISO 5-6	ISO 5-6	ISO 4-5 dep. On colour	ISO 5-6
Cleaning For more details: pietboon-care.nl							
CALL TB 117	Pass	Pass	Pass	Pass	Pass	Pass	Pass
BS 5852 0	Fail	Fail	Fail	Pass	Pass	Pass	Pass
BS 5852 1	Fail	Fail	Fail	Fail	Fail	Pass	Not tested
DIN EN ISO PART I	Not Tested	Not Tested	Pass	Not Tested	Not Tested	Not Tested	Not tested
DIN EN ISO PART II	Not Tested	Not Tested	Pass	Not Tested	Not Tested	Not Tested	Not tested
NFPA 260	Not Tested	Pass	Not Tested	Not Tested	Not Tested	Not Tested	Not tested
Water repellent	No	No	No	No	No	No	No

SAMPLES



AURE
01-01 **P4**



AURE
02-07 **P2**



AURE
03-11 **P4**



AURE
04-01 **P3**



AURE
05-232 **P3**

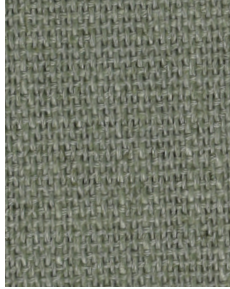
PIETBOON

AURE FABRICS

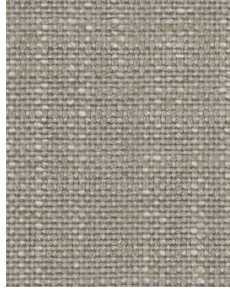
SAMPLES



AURE
06-107 **P2**



AURE
07-37 **P3**



AURE
08-25 **P2**



AURE
09-9138 **P4**



AURE
10-2438 **P4**



AURE
11-45 **P3**



AURE
12-02 **P4**



AURE
13-06 **P4**



AURE
14-108 **P2**



AURE
15-38 **P3**



AURE
16-11 **P3**

PIETBOON

SORIN

HIGH PERFORMANCE FABRICS

FEATURES

NR.	01-0101 02-0105 04-0107	03-0111	05-07 07-08 10-24	06-1604	08-03 09-011 11-02
COMPOSITION	100% PC	87% PC 13% PL	100% PC	100% PP	80% PP 20% PL
WIDTH	140	140	140	140	140
WEIGHT	630 G/LM	630 G/LM	640 G/LM	728 G/LM	826 G/LM
ABRASION (MARTINDALE)	70.000	70.000	70.000	62.000	80.000
COLOUR FASTNESS	ISO 7	ISO 7	ISO 7	ISO 7	ISO 7
CLEANING FOR MORE DETAILS: pietboon-care.nl					
CALL TB 117	PASS	PASS	PASS	PASS	PASS
BS 5852 0	PASS	PASS	PASS	PASS	PASS
BS 5852 1	PASS	PASS	FAIL	PASS	PASS

ALL THE HIGH PERFORMANCE FABRICS ARE WATER RESISTANT

SAMPLES



SORIN
01-0101 **P3**



SORIN
02-0105 **P3**



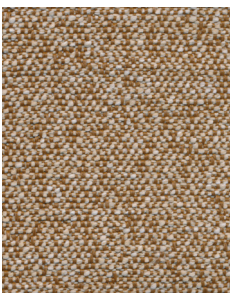
SORIN
03-0111 **P4**



SORIN
04-0107 **P3**



SORIN
05-07 **P3**



SORIN
06-1604 **P3**



SORIN
07-08 **P3**



SORIN
08-03 **P3**



SORIN
09-011 **P3**



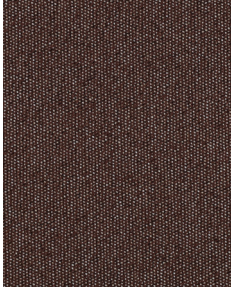
SORIN
10-24 **P3**

PIETBOON

SORIN

HIGH PERFORMANCE FABRICS

SAMPLES



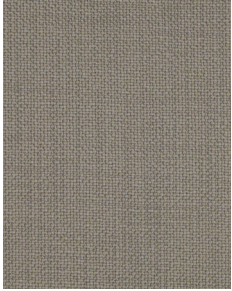
SORIN
11-02 **P3**

PIETBOON

DUNE

HIGH PERFORMANCE FABRICS

SAMPLES



DUNE
11-05 **P3**